

welcome COLOURFest

M'WASH3 PRO



ISTOBAL
Vehicle Wash & Care

THE NEW M'WASH3 PRO

ISTOBAL unifies its M'NEX32 and FLEX5 rollovers (with the 5 brush option coming soon) to present **the new ISTOBAL M'WASH3 PRO.**

A wash and dry rollover consisting of 2 vertical brushes and 1 horizontal brush (soon available with 4 vertical brushes and 1 horizontal brush), with an enhanced control and wash quality. More **technologically advanced** thanks to its latest generation software, with a **modern and innovative design** and greater **wash optimisation.**

A further step in the new generation of **ISTOBAL M'WASH rollovers.** The most efficient and connected technology for all needs.



- ✓ Dual inclination of the vertical brushes for a better wash quality.
- ✓ Frequency converters for greater control over the rotation and tightening of the brushes.
- ✓ New aesthetics: fairing and wide range of colours
- ✓ Top colour LED screen (only in the 3 brushes option), for a better user experience
- ✓ Possibility of 5 brushes (coming soon), to adapt to all market needs.

SPECIFICATIONS AND TECHNICAL DATA

ISTOBAL M'WASH3 PRO

NEW DESIGN + PERSONALISATION

- > In line with the image of the ISTOBAL M'WASH4 rollover, within the high-end models.
- > New styling details that enhance the perception of quality.
- > User-focused design:
 - Doors sloping towards the centre of the sidewall to increase visibility.
 - A slimmer central fairing to give the user a greater sense of spaciousness in the machine.



VINYL COLOURS AND BRUSHES

Its refreshed aesthetics can be customised with a **wide range of colours, including fairing vinyls and matching brushes**, making this rollover a real display.



***No charge**

For other colours please consult the ISTOBAL colour chart.

SPECIFICATIONS AND TECHNICAL DATA



LED TECHNOLOGY

A cleaner aesthetic that looks after the lighting in detail, thanks to the different LED options available:

- 1 Luminous programmable top LED in colour
- 2 LED lighting with colour change effect
- 3 Luminous Indicator "DASH" Programs
- 4 M'WASH light positioner (left and right)
- 5 Infinite Mousse arch lighting



DRYING SYSTEM

The ISTOBAL M'WASH3 PRO rollover dryer has a maximum efficiency and minimum consumption. The design of the horizontal and lateral drying nozzles maximises performance, minimising electrical consumption at low revolutions (1500 rpm engines) for high throughput drying. The machine achieves a high quality drying (even in unfavourable conditions) and less acoustic impact.

Drying powers available:

- 2 x 3 kW on side nozzles
- 2 x 4 kW in horizontal nozzles

3D Flow diffuser improves the quality of horizontal drying, especially at the front and rear of the vehicle.



GREATER ADAPTABILITY with the inclination of vertical brushes

Optimisation of the stroke thanks to the pneumatic inclination of the vertical brushes in two directions:

Lateral tilt: Greater brushing precision thanks to the 10° tilt of the vertical brushes which, in combination with the horizontal brush, perfects the brushing in any shape of vehicle.

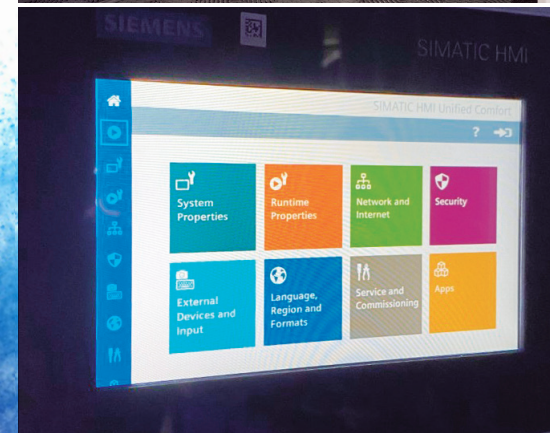
Rear tilting: The pneumatic tilting of the vertical brushes by 12° ensures optimum cleaning.



FULL FLEXIBILITY thanks to the customised configuration of programmes

The flexible programming system that comes as standard with the ISTOBAL M'WASH rollovers allows each wash program to be fully customised.

The system allows to comfortably set speeds, dosing units, light codes and other functions according to the needs and requirements of the selected wash programmes.



INNOVATIVE TECHNOLOGY with the new UNIFIED display

The 7" UNIFIED colour touch screen, integrated in the operator's platform, makes it easy to connect and control all the optional equipment installed on the rollover. As with the ISTOBAL M'WASH4 model, it makes the machine 100% connectable.
- Smartwash ready - provided it is included in the contract.



✓ CENTRALISED CONTROL OF THE WASHING BAY

The M'WASH3 PRO includes a high-capacity, high-speed **Siemens** control system that allows an **agile, centralised control** of the machine. It also has Profi-net connectivity.

As a novelty, the control electronics is made with a decentralised periphery, as is located in the technical room, it is mounted independently of the operator's platform. The new software has been developed by ISTOBAL.

✓ IMPROVED DISTRIBUTION OF FLUIDS

Compact fluid plate that includes a common water manifold at the outlet of the modules, **reducing piping connections** and the number of pipes and fittings. As well as possibilities of water leakage.

As with other rollovers in the same range, such as the M'WASH4, it has a double chemical injector downstream of the solenoid valve, which maintains the membrane insulated from chemicals, extending its life. In addition, it saves space in common circuits where several chemicals are used and allows the use of foamy products requiring air injection in one module.



✓ GREAT VERSATILITY with the different size combinations

WASH DIMENSIONS 3 BRUSHES						
VEHICLE CLEARANCE HEIGHT	2.300	2.400	2.500	2.600	2.700	2.800
OVERALL MACHINE HEIGHT	3.106	3.206	3.306	3.406	3.506	3.606
RAIL LENGTH	3.106	3.206	3.306	3.406	3.506	3.606
VEHICLE PASSAGE WIDTH	2.500	2.700				
MINIMUM MACHINE WIDTH*	4.128	4.328				
MAX. MACHINE WIDTH**	4.313	4.513				

* Includes feed chain

** Includes feed chain + optional anti-scald shields

All dimensions in mm.

> Coming soon 5 BRUSHES

It incorporates the **"Perfect Balance" system**, which guarantees the stability of the entire structure.

Reduction of wash and drying time by up to 30 % compared to the 3-brush machine.

WASH DIMENSIONS 5 BRUSHES					
VEHICLE CLEARANCE HEIGHT	2.300	2.400	2.500	2.600	2.700
OVERALL MACHINE HEIGHT	3.087	3.206	3.287	3.406	3.487
VEHICLE PASSAGE WIDTH	2.500	2.700			
MINIMUM MACHINE WIDTH*	4.128	4.328			
MAX. MACHINE WIDTH**	4.313	4.513			
RAIL LENGTH	9.000				
	10.000				
	11.000				

* Includes feed chain

** Includes feed chain + optional anti-scald shields

All dimensions in mm.

SAFETY

☑ On bay

- > **Acoustic movement signal**
Required on machines working in unattended mode.
- > **Horn stop**
Required for installations using the APP.
- > **External anomaly alarm.**

☑ On machine

- > **Interior profiles**
Safety system to prevent the vehicle from being positioned incorrectly.
- > **Exterior profiles**
Safety system required when there is less than 0.5m between the machine and the adjacent surface: fence, pillar, walls, etc.



OPTIONAL FEATURES



☑ HIGH-PRESSURE

Different options for high-pressure pre-washes which prepare the vehicle to improve the result of the subsequent brush wash. Options range from 15 to 80 bar.

- > **Fixed lateral high-pressure**
For vehicles with coarse dirt such as mud.
- > **High pressure horizontal copying***
Specially formulated for cleaning insects.
- > **Oscillating side high-pressure with rotating nozzles**
Greater impact and coverage for the best cleaning quality.

* Also available with rotating nozzles.



WHEEL-WASH

- > **Disc wheel-wash:** Wheel-wash system with scrubbing brush. Can be fitted with 19" and 21" brushes.
- > **High-pressure disc wheel-wash with 2 nozzles:** It allows special attention to be paid to the wheels and the underside of the vehicle. Its dual direction of rotation achieves better results in new tyre designs.
- > **High-pressure disc wheel-wash with 4 nozzles:** thanks to its 4 nozzles distributed on each disc, it allows the washing of larger rims while improving the washing in the wheel arch area.
- > **High-pressure wheel-wash with rotating nozzles:** It achieves optimal touchless rim washing with its 6 rotating nozzles.

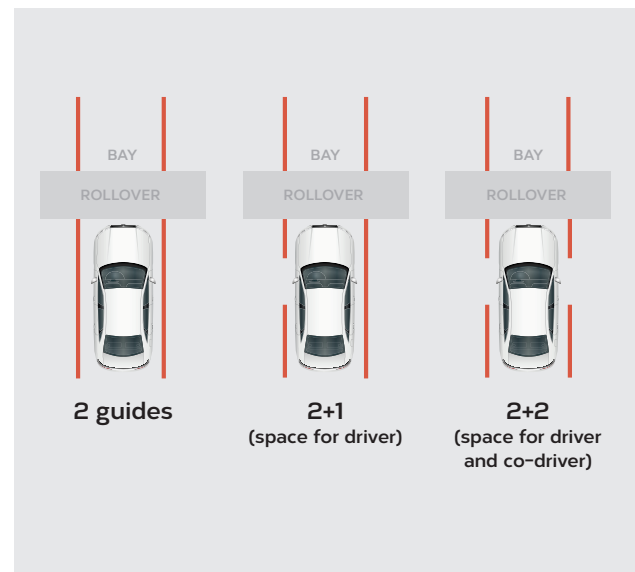
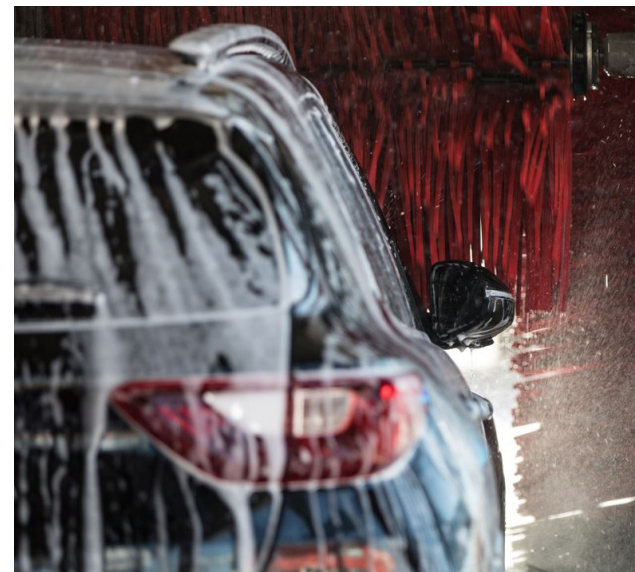
IMPORTANT: For optimal wash on any wheel-wash, a chemical spray is required prior to the wash, the recommended option is the chemical foaming spray for wheels.

Multi-disk wheel-wash brush

With eight self-contained interior brushes that deep clean even the most difficult rims.

Its innovative mechanism promotes the independent rotation of the brushes by detecting friction, allowing it to reach all the grooves of different rims on the market.

This new mechanical system is integrated within the brush, making it easy to fit into any wash machine without any additional mechanism. Also available with integrated high-pressure wheel-wash brush.



INTEGRATED INFINITE MOUSSE FOAM ARCH

It provides a surprising way to wash the vehicle through a foam curtain with **ISTOBAL esens® chemicals** that deposits a layer of high-density product over the entire vehicle body.

With a pleasant scent and **LED lights** that make the car wash experience a spectacle.

Installed on the inner face of the back casing of the rollover, it is applied in a passage independent of the wash.

Two effect options available: waterfall and rain.

CHEMICAL PRE-WASH APPLICATIONS

- > **Chemical foam spray.** For the most stubborn dirt, achieves an exceptional wash.
- > **Lower side chemical spray.** For better cleaning of vehicle skirting boards.
- > **Chemical mosquito spray.** Specially formulated for cleaning insects and dirt from impacts on vehicles.
- > **Chemical hot or cold spraying.** For the most difficult and stubborn dirt.
- > **Chemical spray on foaming rims.** To dissolve the dirt on the rim and make it easier to clean the wheel-wash.

* Options available for entire series

STAINLESS STEEL LED GUIDES

Stainless steel LED centring guides, three possible configurations





✓ REVOLUTIONARY AND EVOLVED

ISTOBAL's revolutionary Link-it® brush fitting system takes it one step further. It evolves with a one-piece mechanism that reduces the weight of the brush and makes it easier to fit, maintain and replace the wash material.

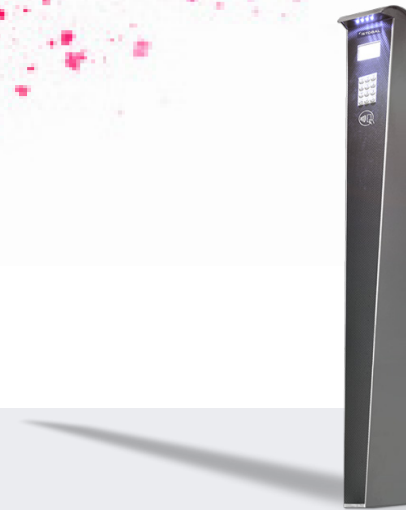
✓ SUSTAINABLE AND TRUSTED

It is not thrown away at different brush changes, which means that up to 50% of the environmental impact caused by the recycling of waste material from a brush section is reduced. In addition, the transport and storage of wash material in a conventional brush system can be reduced by 70%.

In addition, it has a high-impact resistance, thermal factor, fatigue resistance and does not deteriorate with washing chemicals.

Advantages

- Fast and economical maintenance
- Improved ease of assembly.
- Maximum efficiency with minimal expense.
- Interchangeable and disposable material
- Maximum respect for the environment.



✓ Codec

- > 4.3" High-Contrast LCD Display.
- > INOX code numeric keypad.
- > Payment systems for bank and mobile cards.
- > Barcode readers or loyalty cards.
- > Pedestal or wall mounting.
- > Robustness and protection against adverse weather and vandalism.
- > Cost-effective and easy to amortise.
- > Coded operation possible, no connection to Terminal Shop.



✓ Connect-a

- > 4.3" High-Contrast LCD Display.
- > INOX code numeric keypad.
- > Coin and/or token validator.
- > Various payment systems for bank card and mobile.
- > Optional barcode reader and loyalty cards.
- > Cabinet, pedestal or wall mounting.
- > Wide variety of colours.
- > Resolution of queries via the communicator option.
- > Possibility to incorporate control equipment in cabinet version.



✓ Connect-a Touch

- > 8.4" TFT colour display with touchscreen for selection of options and codes.
- > Coin and/or token validator.
- > Various payment systems for bank card and mobile.
- > Optional QR code reader and loyalty cards.
- > Cabinet, pedestal or wall mounting.
- > Wide variety of colours.
- > Resolution of queries via the communicator option.
- > Possibility to incorporate control equipment in cabinet version.
- > Kiosk-like operation to enable additional services.

CHEMICAL PRODUCTS



PRE-WASH INSECT & RIMS

Highly concentrated 2-in-1 mosquito and rim pre-wash. Removes insects and bird droppings on vehicle bodies and doubles as an effective wheel cleaner.

SHAMPOO CLEAN & CARE PLUS

Excellent shampoo specially designed for brush cleaning, the continuous use of which prevents soiling and slime formation, thus facilitating the maintenance of brushes and promoting a high-quality wash.

RAIN WAX PLUS

Premium wax for rain, that achieves an extraordinary shine and exceptional drying, this water-repellent wax causes rain to disperse when travelling at more than 80km/hour. Anti-rain effect and long-lasting shine.

POLISH WAX

Recommended product for achieving a mirror effect. After application, the brushes massage into the surface of the vehicle to provide an extra shine while protecting the paintwork.

CONNECTIVITY



In a digital world, it goes without saying that your car wash installation should be digital too. ISTOBAL increases the profitability and operational time of your machines, providing you with advanced maintenance and management services, as well as access to your equipment data.

You can also access accounting data, with a platform that exchanges information between different sales outlets and consumption. Smartly manage your facility, increasing its efficiency and giving your users the best wash experience.

ISTOBAL SERVICES



CHEMICAL PRODUCT SERVICE

ISTOBAL esens® is your perfect formula for getting the most out of your car wash equipment and providing the user with an extraordinary experience. Our extensive network of experienced consultants will advise you on the best pre-wash, shampoos and waxes, giving you the guidance you need in order to achieve the best possible performance. Take advantage of chemical products services, safe in the knowledge that you can always count on ISTOBAL products.



TECHNICAL SERVICE

ISTOBAL offers the world's most comprehensive and technologically advanced Technical Assistance Services for wash equipment. The ISTOBAL Technical Service offers predictive maintenance as well as remote support to ensure the most rapid and effective maintenance possible, at your beck and call. Why not take advantage of the various maintenance contracts on offer, avoid any concerns or unpleasant surprises, and leave it all to us?



MARKETING SERVICE

We want your business to grow, that's why we propose marketing campaigns to build sales, increase traffic and create the trust and collaboration that you need to make your clients loyal. A carefully managed, 100% ISTOBAL presence, posters, advertising banners and evaluation of promotions and commercial campaigns will help you to push your business forward.

DISCOVER THE ISTOBAL EXPO



We invite you to visit the ISTOBAL EXPO, a product showroom located at our headquarters in L'Alcúdia - Valencia, Spain to discover our latest products and solutions, including the **ISTOBAL M'WASH3 PRO** rollover.



ISTOBAL

Vehicle Wash & Care

Date of update: March 2023

The images, videos and information appearing in this space are merely illustrative and non-binding, may be optional, or not available depending on the model, and do not constitute an offer. You can contact ISTOBAL's sales department for any additional information or to request a quotation for our products.